

NEW MODEL

Discover

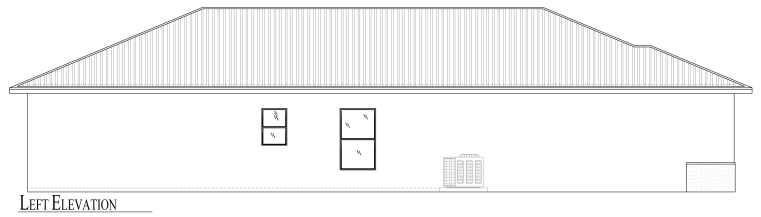
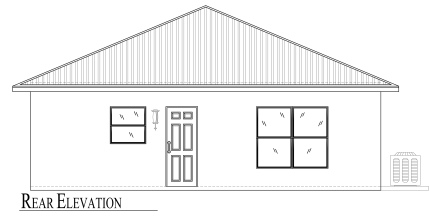
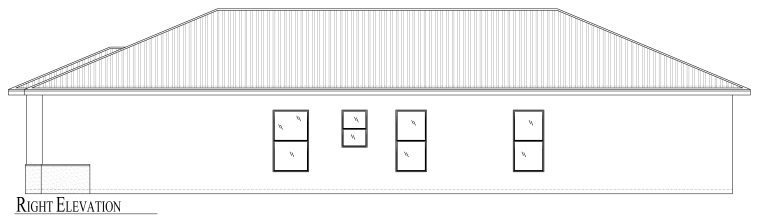
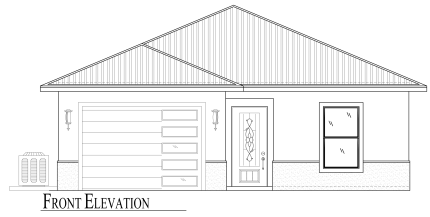
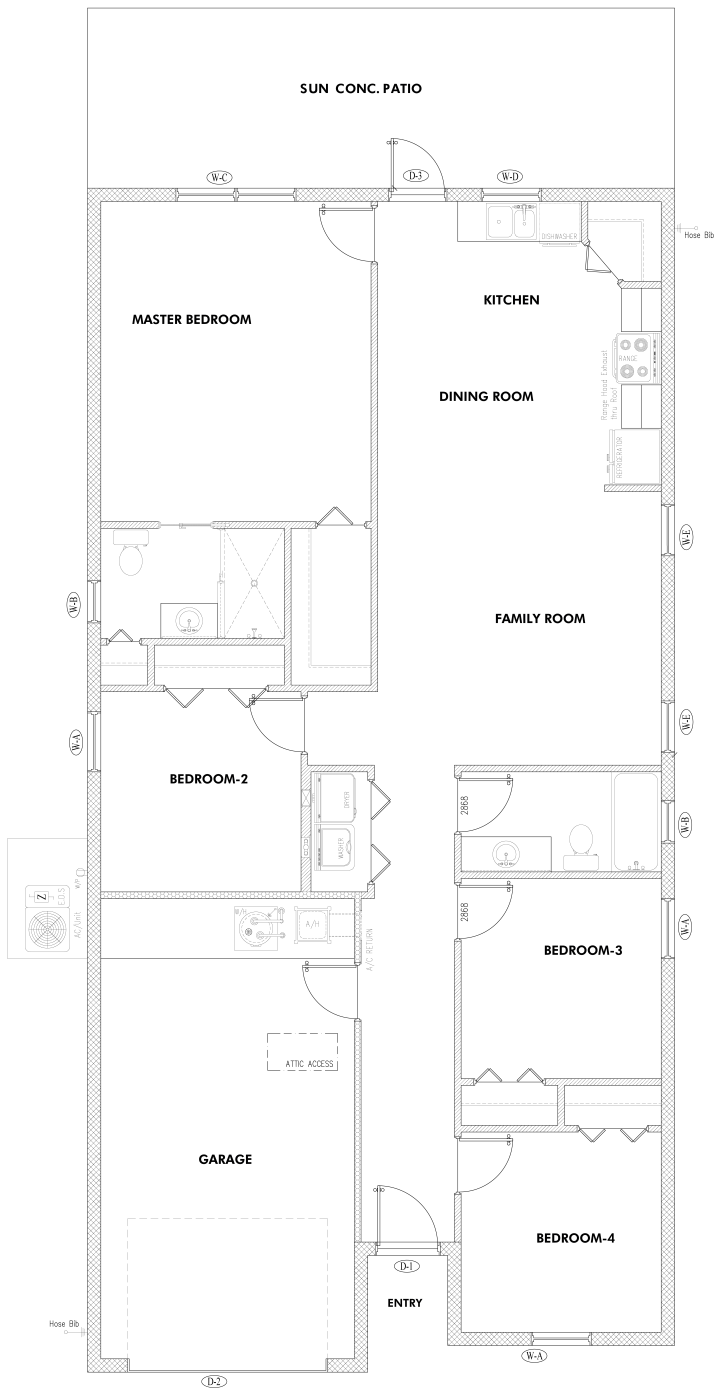
Clover



Features

- Residences delivered with wood-like waterproof floor
 - Spacious insulated impact windows
 - Granite in kitchen countertops and bathrooms, fully finished with customizable accessories and blinds
 - LED lighting adaptable to your color preferences
NEUTRAL - COLD - WARM
 - Practical high-efficiency AC System
- 5V metal roof adaptable to desired color and finish
 - All stainless steel appliances
- The residence features all high quality stainless steel appliances
 - Energy Efficient 40 Gallon Water Heater
 - Smart consumption chrome faucet
 - Modern shaker cabinets





Living Area: 1,367 ft² | 126 m²
 Garage: 330 ft² | 30 m²
 Total Area: 1,979 ft² | 183 m²



*“Everything must start with
a solid foundation”*

PH: 239-362-3899
5011 Lockett Rd , Suite #6
Ft Myers , FL 33905
info@silvergroupllc.com
www.silvergroupllc.com